

SIM User Guide

Version 09/09/2017

This document describes the version 3.xx from September 2017, but may also apply to previous or later versions. Simple Inventory Manager is an active software that is regularly improved and updated. To avoid complex automatic updates, which can slow down PC startups, it is you who decides when to update by consulting the website www.simple-inventory-manager.com, where you can also find videos and application examples.

Table of contents

1.	Introduction.....	3
2.	First Step.....	4
3.	Products tab	8
4.	Suppliers tab.....	10
5.	Logs tab.....	12
6.	Label printer tab	14
7.	Inventory tab	20
8.	Tools tab	22
9.	Advanced features.....	25

1. Introduction

Efficient

SIM was developed for instant implementation and immediate usage by any kind of user, for all types of organization or activity.

Simple

Unlike many inventory managers, SIM is not simply an option or addition to accounting or business management software suites. It is a tool for field employees working directly with the inventory, who are interested in real time availability, monitoring and supply. Easy use and ergonomics take precedence over administrative and financial aspects.

Strength

Built using the Microsoft.Net standard and a SQL database, SIM is an open and scalable software. A number of variants exist, and all modifications and improvements that you probably need are already available or easily attainable. To ensure that the software remains simple, its architecture is modular: you only pay and see what is useful to you.

International

Since 2014, SIM is available in English, Spanish, and German, at no extra charge. You, yourself can translate the SIM text file, and adapt it to your country, culture, or even your practice. Sometimes the original name GSM (Gestion de Stock Modulaire) may appear instead of SIM.

2. First Step

Installation

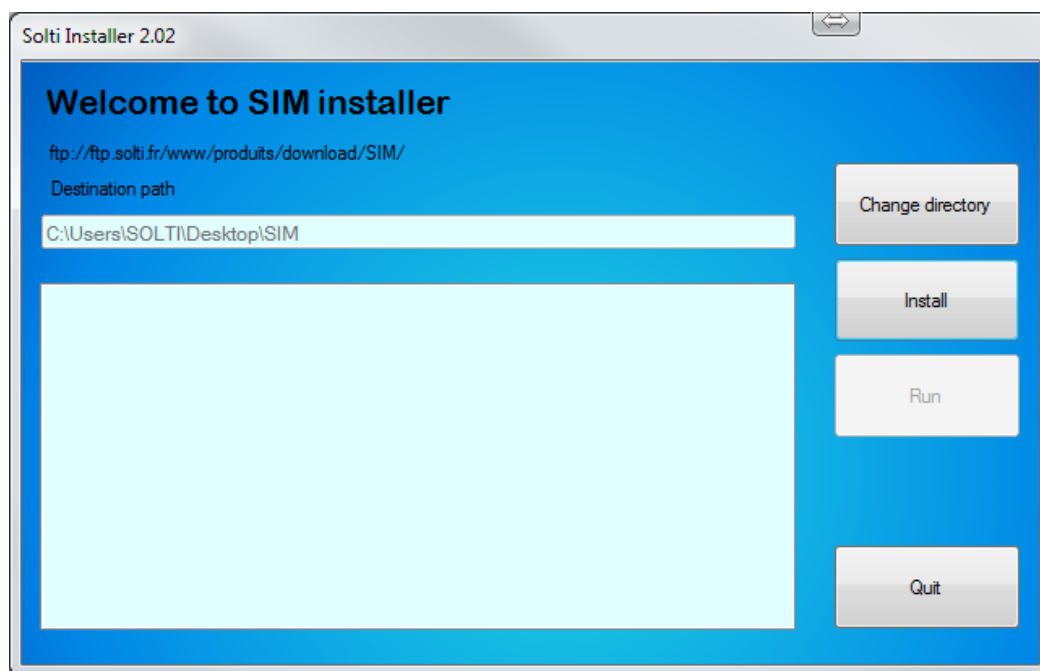
The best quality of SIM is the easiness in its use. Installing the software consists of copying a directory containing a dozen files, anywhere on your PC. We recommend you to simply download the files from www.simple-inventory-manager.com



It poses no threat to your PC! The easy process to installing the software also allows using SIM in a number of directories and cloud networks, for which you can consult us for more information.

Automatic Installation

On certain websites, you find installer.exe files to download. By running this program, the files are copied from the SIM website into a directory of your choice, which by default is the Desktop/SIM.



The “Change directory” button allows you to install it anywhere on your disk. The “Install” button will perform loading. The “Launch” button will run SIM. You only need to create a shortcut on your desktop or taskbar.

ZIP Files

On certain websites, you will find a SIM.zip file to download. It is a compressed SIM directory. The step by step procedure for installing the software is available on the website both as a video and as a pdf file which you can easily download.

User Interface

The user interface has 4 tabs or 4 different pages. These tabs perform in the same way as other Windows applications like Excel.



Each tab contains a table called a “DataGrid” containing data

Screen sections

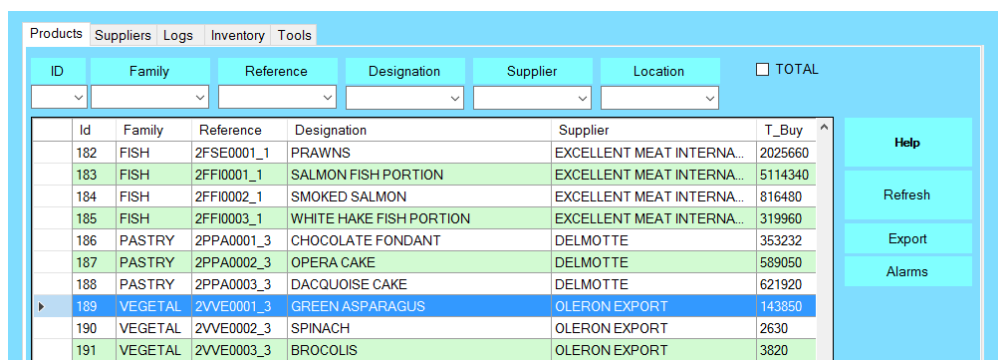
Whichever the tab, each display includes 4 sections dedicated to the following actions:

In the upper left hand corner, the tab selection corresponds to the work to be done

- The search boxes (or scroll lists), according to the tab selected
- The data display area
- The button area which proposes actions to be performed on the selected line.

Record Selection

Each line of data is known as a ‘record’. Most actions are accessible by clicking on the button located to the left of each relevant line. This precaution prevents launching actions without having explicitly chosen the line.



Right click

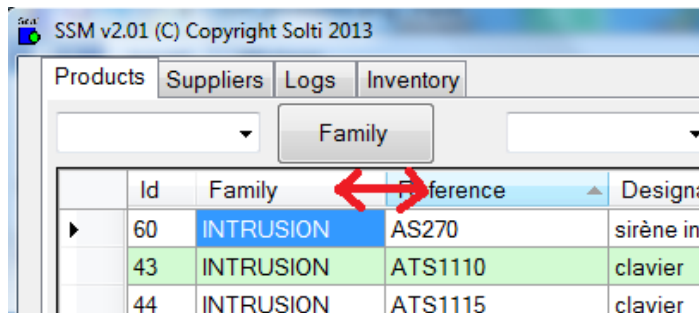
Like most Windows applications, a right click on a line opens a user menu. This enables triggering only one action at a time on the selected item. A list of possible actions is available on buttons to the right of the screen, which can be performed on several items at once.

CAKE	DELMOTTE	3465
JOISE CAKE	DELMOTTE	1840
N ASPARAGUS	DELMOTTE	3465
CH		
OLIS		
TABLES MIX		0
CH GREEN BEAN		0
N PEAS		0

Insert products to the stock (buy)
 Output products from the stock (sell)
 Modification of selected product
 Create a new product
 Cancel

Column width

Each table column (the DataGrid or the grid) can be widened or narrowed by selecting the line that separates two column headers, and dragging it to left or right. Double-clicking will set the column width to the fitting value.



To save the columns width, you need to exit the screen with the 'quit' button: the next time you launch the application, the saved widths will be used.

Sorting Records

By default, the data are sorted from oldest to newest. To change this order, simply click on the header of each column to sort it alphabetically from A to Z, or Z to A. This convenient feature is more accessible than using Excel.

The screenshot shows a table with the following data:

Supplier	Quantity	Mini	Location	U-Buy	T-Buy	U-Se
GE SECURI...	2323	0	stock	223	518029	
ELECTRON...	56	25	stock	0	0	
ABIX	33	15	stock	0	0	
ACCUNORI...	30	7	stock	0	0	
ABIX	29	15	stock	0	0	
support ecran	23	0		0	0	
GE SECURI...	22	10	stock	0	0	
GRUSON	19	5	stock	0	0	
GE SECURI...	16	10	stock	0	0	

A red circle highlights the 'Supplier' header, indicating it is being sorted.

Searching Records

To facilitate working with large quantities of important data, the search box allows the display of only records fitting the selected criteria. For example, in order to search for all "bolts" type products, just type the word "bolt" in the designated box, and hit "Return" or the button on the right. Only the records including the word 'bolt' appear. Also, it is possible to simply enter "bo" or "Its". In the logbook screen, it is possible to combine criteria.

GSM v2.259K (C) Copyright Solti 2015

Products Suppliers Transaction Bikes Logs Inventory Labels Tools

ID Family CodeBarre Designation Quantity

62 en 23 short joh

Id	Family	Reference	Designation	Supplier	Quantity	Mini	Location	U-Buy	T-Buy	U-Sell
1	ROYAL ENFIELD	TSM002/S	T Shirt Ma...	Royal Enfield (apparel)	2	1	BOX 4	719	1438	1650
2	ROYAL ENFIELD	TSM002/M	T Shirt Ma...	Royal Enfield (apparel)	0	1	BOX 4	719	0	1650
3	ROYAL ENFIELD	TSM002/L	T Shirt Ma...	Royal Enfield (apparel)	6	1	BOX 4	719	4214	1650

To return to the display of all the records, just use the “refresh” button. It is possible to recall the last 10 searches performed, by clicking on the arrow of the search box.

3. Products tab

Display

The first tab is intended for the most common daily work: Incoming and outgoing inventory products. The “products” are all the objects that can be found in the inventory which carry the same references. The first tab displays the quantity of each product and products on warning alert.

Mouse click

When clicking on a line, a popup menu offers the following choices:

- Insert product**
- Output product**
- Modify product**
- Create a new product**
- Print a label**
- Cancel**

The Output and Input functions from the mouse right click moves only one reference at a time, buttons are used to move more than one reference at a time.

Products tab buttons

Button	Action
Help	Opens the user manual for SIM on a web browser.
Refresh	Restores data from database in the original form, after sorting data or to make sure that a networked base is updated.
Clear	Deletes all products from database, after user confirmation.
Export	Send displayed data to an Excel file, respecting the displayed order Please use SEPARATEUR_CSV= , when CSV export does not use ;
Alarms	Shows only products with quantity under threshold
Barcode	Opens a dialog window for scanning labels
Input	Opens a dialog window to add products into stock
Output	Opens a dialog window to remove products from stock
New	Creates a new product reference
Modif	Edits the selected line to alter a reference
Quit	Exits the application

Product definition

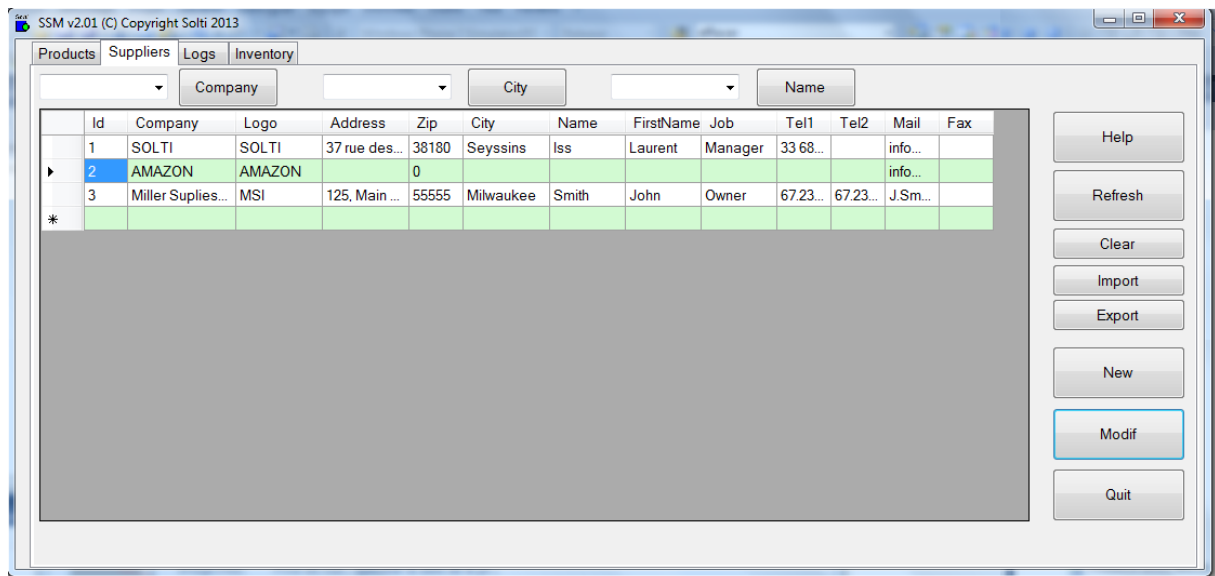
Before anything, let us see what “products” means for SIM, as terms are very important to avoid misunderstanding when working under stress. Here are the definitions of product parameters:

Field	Format	Description
ID	Integer	Identifier. Each product has a unique identifier given automatically by the database system and It cannot be changed. In normal circumstances, you never need to change it. Usually, it is given in chronological order.
Category	String	To facilitate sorting, each product can have a category associated. There are no pre-defined rules about how to choose a category name. No specific processing is done on the category names as the application uses ID and references.
Reference	String	Each product has one reference, each reference corresponds to only one product. This reference can be the bar code value or any unique string. Choosing a good reference naming system is the key of user comfort and system reliability.
Designation	String	This field is not used (except for search requests) by the system and may be used so that non-specialist users can clarify a reference by details like aspect or user warnings.
Supplier	String	The supplier name is taken from the supplier table which is detailed in a different tab. You don't need to use this field.
Quantity	Decimal	The number of actual products of the same reference in stock. This number can be anything, even a negative value as it is your responsibility to check if it matches with the actual stock.
Mini	Decimal	This is the minimum quantity you want to keep in stock at any time. When the real quantity is lower, the quantity will appear in red, as for ID 14 in the samples screen. Mini is specified when creating a new product.
Location	String	This field is not used by the system, you can write anything that will help users find or sort products. Location is specified when creating a new product.
U-Buy	Decimal	This field contains the unitary cost of the product, when added to stock. Buying costs in SIM is not required. You can also use the CUMP feature to make use of the average value of the actual stock.
T-Buy	Decimal	This is the product of U-Buy by Quantity for a specified product.
U-Sell	Decimal	This field contains the unitary price of the product. Buying costs in SIM is not required. You can also use the CUMP feature to make use of the average value of the actual stock.
T-Sell	Decimal	This is the product of U-Sell and Quantity for a specified product.

4. Suppliers tab

1. Display

The suppliers tab is used to keep track of supplier's information, for user comfort.



Suppliers tab buttons

Button	Action
Help	Opens a web browser on SIM web pages.
Refresh	Restores data from database in the original form, after sorting data or to make sure that a networked base is updated.
Clear	Deletes all suppliers from the database.
Import	Imports data from an Excel .csv file
Export	Sends displayed data to an Excel file
New	Creates a new supplier
Modif	Edits the selected line
Quit	Exits application

Supplier definition

Field	Format	Description
ID	Integer	Identifier. Each product has a unique identifier given automatically by the database system and cannot be changed. Normally, you don't have to change it. Usually, Identifiers are given in chronological order.
Company	String	The full name of the company
Logo	String	The short usual name, if any
Address	String	To send letters and return material

Zip	Integer	Zip code
City	String	Location
Name	String	Name of your main contact
First Name	String	First name of your main contact
Job	String	Main contact's function
Mail1	String	Main contact's mail
Mail2	String	Secondary mail
Fax	String	Fax

5. Logs tab

Display

The logs tab is used to keep track of any changes performed on the stock.

Log tab buttons

Button	Action
Help	Opens a web browser on SIM web pages.
Refresh	Restore data from database in the original form, after sorting data or to make sure that a networked base is updated.
Clear	Deletes all logs from database, after user confirmation.
Export	Sends displayed data to an Excel file
Modif	Edits the selected line
Quit	Exits application

Log definition

We call 'movement' an operation moving data into or out of stock. All movements are stored (logged and) in the journal. Operations such as modifying and deleting an item are also stored.

Field	Format	Description
-------	--------	-------------

ID	Integer	Identifier. Each product has a unique identifier given automatically by the database system. It cannot be changed. Normally you don't have to change it. Usually, identifiers given in chronological order.
Dates	String	Date and time of the operation
Type	String	Before = quantity before movement After = quantity after movement Input = products added to stock Output = products taken out of stock Modif = modification of product details
Comment	String	Comment eventually entered relating to the action
Category	Integer	Product group
ID_prod	Integer	Product ID
Reference	String	Product reference
Designation	String	Product designation
Supplier	String	Product supplier
Quantity	Decimal	Product quantity in stock
Movement	Decimal	Quantity moved
Mini	Decimal	Product minimum
Location	String	Location
U-buy	Decimal	Unitary buying price
U-sell	Decimal	Unitary selling price

6. Label printer tab

Introduction

The use of this tab to print labels is reserved for holders of the "bar code printing" license available on www.simple-inventory-manager.com

It is important in all of the following to distinguish the two types of printers that you can use with SIM:

- Professional Zebra label printers, which print labels in rolls.
- Classical printers that print (rather badly) labels on board

You will easily understand that some functions are possible with one of the two types of printing only.

Display

The Labels tab is optional, and may vary from one version to another to accommodate the many possible uses of labels. It allows to print barcode labels with references of SIM products.

GSM v2.52 (C) Copyright Softi 2015

Products Suppliers Logs Inventory **Labels** Tools

Printer: PDFCreator [Select]
Title: [Text Field]
Family: BAKERY [Dropdown]
Reference: CLASSIC SQUARED BREAD ROLL 57G [Dropdown]
Designation: 26BR0003_5 [Dropdown]

Configuration
Try
☒ Simulation
Nb: 1
Print
Create list
Print list
Out

BAKERY
CLASSIC SQUARED BREAD ROLL 57G
26BR0003_5

The area on the left describes your central zone setting showing a label and a label sheet as they will be printed. The center displays a simulation of the label. The right area has all the control buttons.

7.2 Barcode Definitions

The first drop-down list is used to select the printer to be used. Caution: To return to the "default" printer of Windows it must be selected by leaving this screen, otherwise the usual users of the PC will print their documents on the labels.

The input fields Title, Categoryy, Designation and Reference are the texts that will be printed. You can familiarize yourself by entering them by hand, but the drop-down boxes allow you to choose the correct labels in your database in possibility of error.

The way the software will use or transform this information to reproduce it on the label is fully defined by the CODE128 and CODEEAN parameters of your configuration.

The box number allows you to enter the number of identical labels you want to print.

Log tab buttons

Button	Action
Select	Opens the list of printers to use
Configuration	Opens the parameter file which contains a [ETIQUETTE] section that may need to be modified. Call us for more details.
Validate	Variation of the previous button. Allows to update the software with modifications of the Etiquette.ini file
Try	Prints one label
Print	Sends the specified number of labels to the printer
Create list	Generates a CSV file containing the text of the labels for all products
Print list	Prints the list from the previous file. The file can be modified as required.
Quit	Exits application

The format of the configuration file is described below. It is important to use the "validate" button after each modification of the label.

A label is displayed in large format for adjustments.

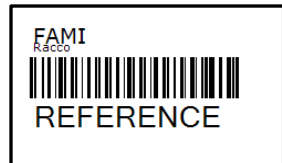
The format of the .CSV file used for the boards is of the type "line1; line2; line3; ". In general, line 3 is used for the barcode.

Simple label settings

This chapter describes the setting for one label.



In this sample, we use EAN code. The label is made of 3 lines, from the top to the bottom. The text which appears under the barcode, it is the barcode value.



In this sample, we use code 128, which enables the use of most characters. There are nearly 40 predefined label formats.

Most settings are optional, they have a default value.

In Etiquette.ini we have the following parameters:

```
[DATA]
NOMBRE=5           // Number of labels to print
TITRE=My Company   // Tittle for all labels

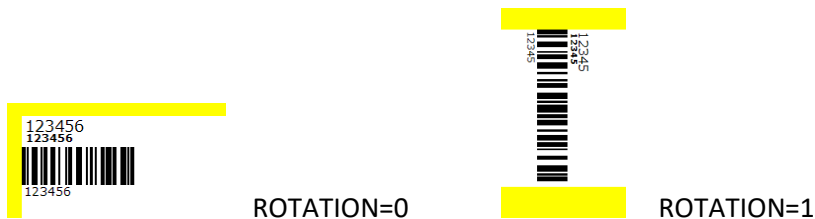
[ETIQUETTE]
CODE128=0           // Using code128
CODEEAN=8           // Using code EAN
HAUTEUR=20          // Height of barcode drawing
LARGEUR=60          // Width of barcode drawing
OFFSETX=10          // Horizontal shift for all printing
OFFSETY=10          // Vertical shift for all printing
X1=0                // Horizontal position the first line
Y1=0                // Vertical position of the first line
F1=12               // Height of the font of the first line
L1=20               // Maximum character length of the first line
X2=1                // Second line X
Y2=8                // Second line Y
F2=8B               // Second line height, 8 pixels, bold font
L2=20               // Second line length
X3=0                // Line 3 = Barcode drawing position
Y3=16               // Line 3 position
X4=0                // Line 4 position, if any
Y4=16
```

The optional zoom parameter allows you to print barcodes with a fixed bar width instead of the total width of the fixed bar set. This makes it possible to improve readability when needed.

```
ZOOM=5             // Optional parameter to use for fixed scale barcodes, replaces width param
```


Unit is usually half millimeter. It depends of your printer. There is an unlimited number of possibilities. You can always send us a drawing for the label you want.

ROTATION is another optional parameter, to change printing direction.



The unit is normally half a millimeter. The example above gives the label as an example. There is an infinite variety of label formats, including content, shape, dimensions, and fonts.

Multiple label printing

If you do not want to invest in a dedicated printer, you can use adhesive boards on a classical inkjet printer. Use the **Generate List** and **Print List** buttons. You must add in the settings file:

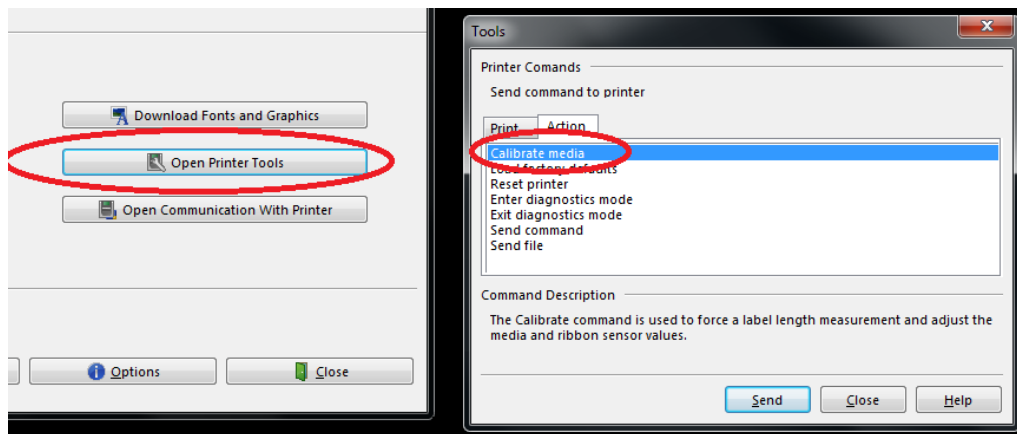
```
[ETIQUETTE]
PAS_HORIZONTAL=100      // Horizontal distance between two labels
PAS_VERTICAL=50         // Vertical distance between two labels
NB_HORIZONTAL=4         // Number of labels in a row
NB_VERTICAL=8           // Number of labels in a column
```

If you use a label printer, for which each label is a different page, you must set the following setting:

```
[ETIQUETTE]
NB_HORIZONTAL=1
NB_VERTICAL=1
```

Zebra printers

Zebra printers really have a lot of quality, but the ergonomics of the software provided is catastrophic. By default, the EPL driver is installed and you have to go to the printer setting panel in your window to select the advanced settings and change the driver to the non EPL driver. Sometimes, to adjust the setting of the printer you have to install the Zebra printer utility.



The calibrate media function is very powerful. If it does not work, please ask Zebra for support.

Code 128 labels

The most powerful barcode coding is CODE128. It enables letters, uppercases and low cases, as well as many symbols. A lot of formats are already integrated into SIM.

Pre-defined SIM labels formats

You can select one of these formats with the parameter CODE128=XXX



This is the list in May 2016. Please ask for specific labels.

7. Inventory tab

Display

The inventory tab is independent of the usual stock management. It is dedicated to inventory operation, performed on specific occasions to check if the theoretical stock, in the products tab, really matches with what can be seen in the warehouse. In order to check, this specific tab enables the following operations:

- To fill a list of products with theoretical quantities
- To enable the user to add actual quantities
- To display differences
- To update stock panel only for quantities that have been checked
- Quantities that have not been checked remain unchanged in the product tab

Id	Family	Reference	Designation	Location	Quantity	Real	Diff
1	ROYAL ENFIELD	TSM002/S	T Shirt Made Like A Gun Gr...	BOX 4		2	-1
2	ROYAL ENFIELD	TSM002/M	T Shirt Made Like A Gun Gr...	BOX 4		0	-1
3	ROYAL ENFIELD	TSM002/L	T Shirt Made Like A Gun Gr...	BOX 4		6	-1
4	ROYAL ENFIELD	TSM002/XXL	T Shirt Made Like A Gun Gr...	BOX 4		0	-1
5	ROYAL ENFIELD	TSM002/XXL	T Shirt Made Like A Gun Gr...	BOX 4		0	-1
6	ROYAL ENFIELD	TSM001/S	T Shirt Made Like A Gun Bl...	BOX 4		2	2 0
7	ROYAL ENFIELD	TSM001/M	T Shirt Made Like A Gun Bl...	BOX 4		0	-1
8	ROYAL ENFIELD	TSM001/L	T Shirt Made Like A Gun Bl...	BOX 4		0	-1
9	ROYAL ENFIELD	TSM001/XXL	T Shirt Made Like A Gun Bl...	BOX 4		2	3 1
10	ROYAL ENFIELD	TSM001/XXL	T Shirt Made Like A Gun Bl...	BOX 4		0	2 2
11	ROYAL ENFIELD	PRE001/S	Polo Enfield White MLG	BOX 4		0	4 4
12	ROYAL ENFIELD	PRE001/M	Polo Enfield White MLG	BOX 4		18	0 -18
13	ROYAL ENFIELD	PRE002/L	Polo Enfield White RE	BOX 4		0	0 0
14	ROYAL ENFIELD	PRE001/XXL	Polo Enfield White MLG	BOX 4		0	4 4
15	ROYAL ENFIELD	PRE001/XXL	Polo Enfield White MLG	BOX 4		0	5 5
16	ROYAL ENFIELD	BRE001	Buff Reflective	BOX 4		1	0 3
17	ROYAL ENFIELD	BRE002	Buff Original	BOX 4		3	-1
18	ROYAL ENFIELD	JRE001/S	Leather Jacket RE			3	-1
19	ROYAL ENFIELD	JRE001/M	Leather Jacket RE	BOX 3		2	-1
20	ROYAL ENFIELD	JRE001/L	Leather Jacket RE	BOX 3		1	-1
21	ROYAL ENFIELD	JRE001/XXL	Leather Jacket RE	BOX 3		1	-1
22	ROYAL ENFIELD	JRE001/XXL	Leather Jacket RE	BOX 3		0	-1

Inventory definition

In the inventory list, some information concerning all the products of the stock tab is duplicated, completed by two columns specific to inventory.

Field	Format	Description
ID	Integer	Product identifier
Quantity	Decimal	Theoretical quantity in stock, from product tab
Real	Decimal	Actual quantity checked by user
Difference	Decimal	Automatically updated difference. Appears in red if actual stock is lower than theoretical, yellow if actual is higher and not colored if equal.

Inventory tab buttons

Button	Action
Help	Opens the web browser on SIM web pages.
Refresh	Restores data from the database in the original form, after sorting data or to make sure that a networked base is updated.
Clear	Deletes all inventory data.
Export	Sends displayed data to an Excel file
Save	Updates stock quantities according to user's actual quantities
Save	Updates stock according to user's real/actual quantities
New	Initializes the inventory product list from stock's information. Makes sure previous data have been saved.
Quit	Exits application

8. Tools tab

Display

The tool tab is separated into two sub-tabs. Depending on your chosen options, you can have more sub-tabs and more buttons in each sub-tab. Here we will describe the basics.

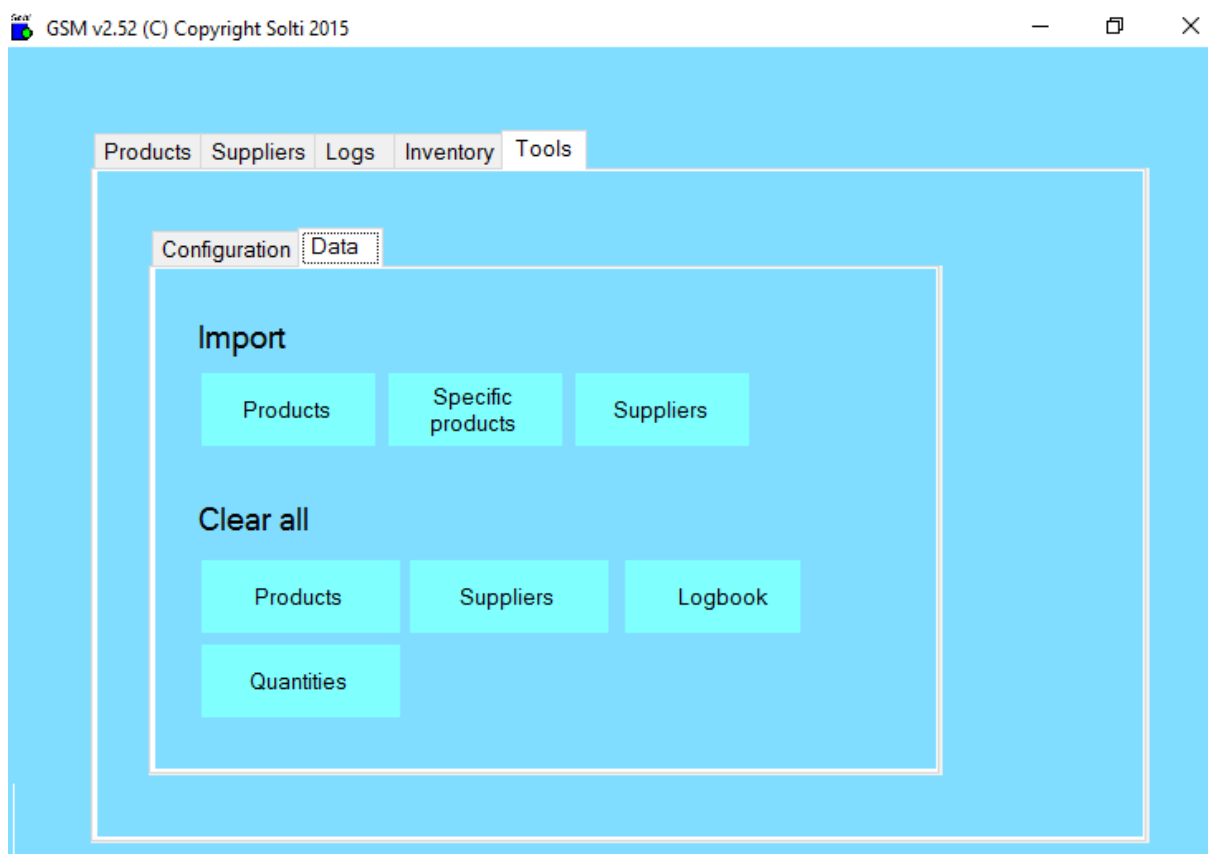
Tools Configuration tab



Configuration tab buttons

Button	Action
Edit	Opens a text file GSM.ini containing all parameters using the good old FILE.INI windows format. Parameters are grouped into [SECTIONS]. There is one parameter name and one value per line.
Restart	Restarts the application after a parameter change.
Clear	Deletes all inventory data, after user confirmation.
Files	Opens a file browser window to SIM folder.
Colors	You can change the color of SIM windows and SIM buttons.

Tools Data tab



Data tab buttons

Button	Action
Import	
Products	Lets you select a CSV file (text with columns separators) to import product data, according to SIM export format.
Specific Products	Lets you select a CSV files to import product data, under any format as explained hereafter.
Suppliers	Lets you select a CSV file containing the supplier's description.
Clear all	
Products	Removes all product descriptions and quantities in the database. Dangerous!
Suppliers	Removes all suppliers from database.
Logbook	Removes all logs from database.
Quantities	Sets all product quantities to zero. Dangerous!

Here is the explanation for **Specific Products Import**:

The screenshot shows the 'ImportForm' interface with three main columns: 'Source columns', 'Destination columns', and 'Matching'. The 'Source columns' list includes '03.Reference', '04.NbProd', '05.Nom du produit', '06.Emplacement', and '07.Prix'. The 'Destination columns' list includes '01.Id', '03.Reference', '04.Designation', '06.Quantite', '07.Mini', '08.Propriete', '09.Emplacement', '10.PUA', '11.PTA', '12.PUV', and '13.PTV'. The 'Matching' column shows two rules: '02.Famille=01.Groupe' and '05.Fournisseur=02.Fournisseur'. On the right, there are buttons for 'File', 'New format', 'Import', and 'Close'. Below the 'Import' button is a 'Close' button. At the bottom, there are labels: 'One click' under Source columns, 'Double click' under Destination columns, and 'New format to clear' under Matching.

Source columns	Destination columns	Matching
03.Reference	01.Id	02.Famille=01.Groupe
04.NbProd	03.Reference	05.Fournisseur=02.Fournisseur
05.Nom du produit	04.Designation	
06.Emplacement	06.Quantite	
07.Prix	07.Mini	
	08.Propriete	
	09.Emplacement	
	10.PUA	
	11.PTA	
	12.PUV	
	13.PTV	

One click Double click New format to clear

1. Select the type of your file separator: Semicolon, Comma or Tab.
2. Open your file with the 'File' button
3. Column headers of your file are displayed next to the SIM columns. For example, as you can see on the image above, by clicking once on the name of the product in the source column on the left and then clicking twice on designation in the destination column, you can define how data will be copied. Here the SIM designation column will take the Group column values of your file. Do this for all columns that are requested by SIM. You do not necessary need to use all columns.
4. Press the Import button.

When you return to this screen, SIM will offer to re-use the latest format. In order to delete a line of the format, you must double-click on it.

CAUTION: Importing prices does not work if your columns contain \$ or another currency sign. We need the original cells to be in "number" format.

9. Advanced features

Since SIM is an open application based on standards such as Microsoft .NET, Access, SQL, Excel, there are many possibilities for installing, using and customizing it to suit your requirements, your information system or your network. Please contact us for more information.

Parameters

SIM parameters are stored in the text file GSM.ini. All parameters are gathered under the [divers] section. You only get a detailed description of the parameters once you have purchased a full licensed version.

The only thing you need to know is that parameters are grouped into sections with names in brackets:

[DIVERS]

[PRODUITS]

Within every section, each line contains one parameter, along with its name and value.

LICENCE1=23445

If you buy a license, you may have to edit and modify this file; we will help and support if necessary.

----- End -----

Your contact:

Mail: contact@simple-inventory-manager.com

Site: www.simple-inventory-manager.com